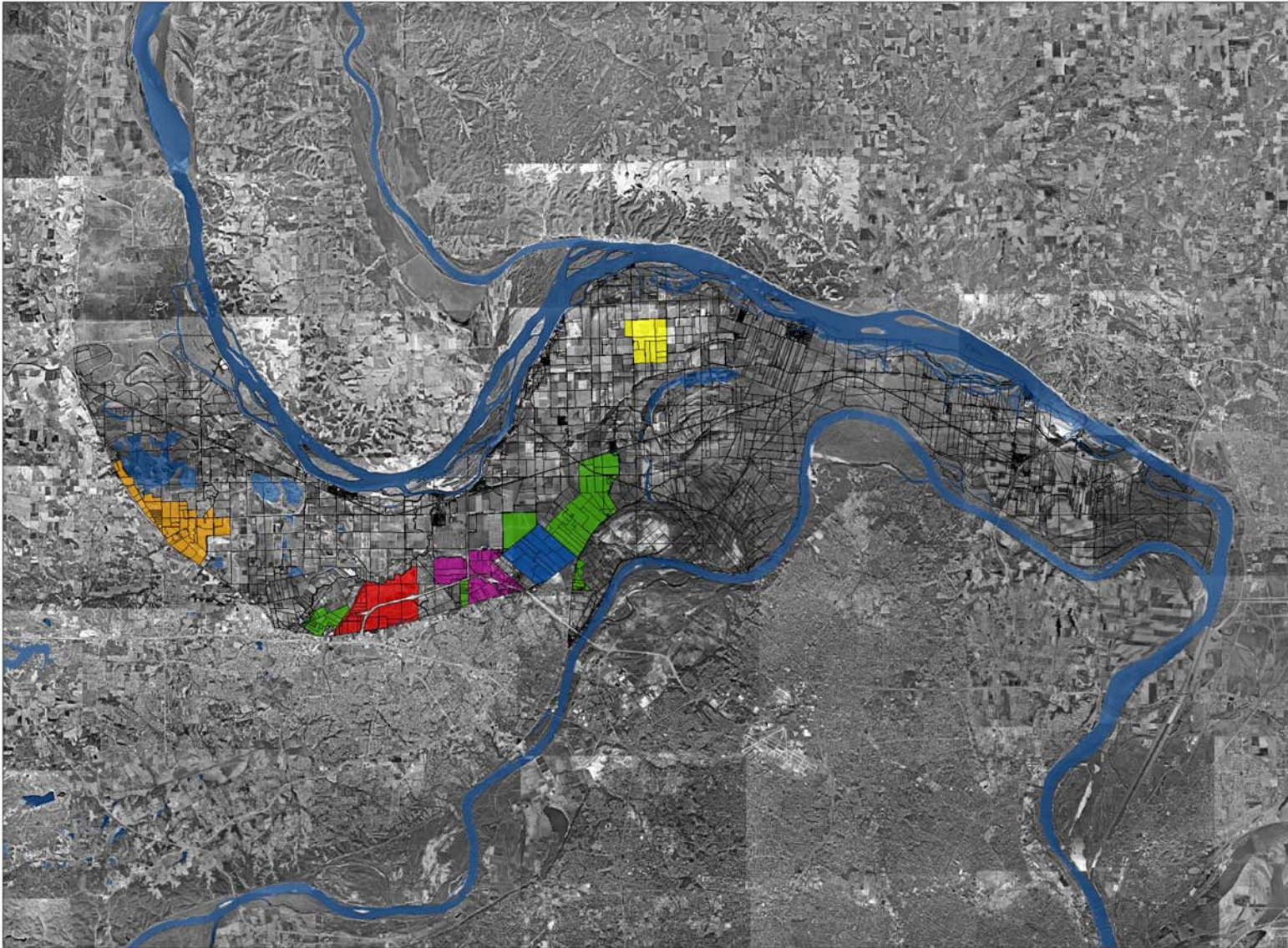


Immediate Development Projects in the Confluence Flood Plain



Legend

-  County Proposed Development Zone - 2015 Master Plan
-  4,300-Unit Residential Development - Whittaker Homes/St. Charles
-  Existing TIF Developments - St. Charles
-  Smartt Airport Expansion - St. Charles County
-  Proposed Development Zone - O'Fallon
-  1,600-Acre/500-Yr Levee Proposed Development - St. Peters



Great Rivers Habitat Alliance